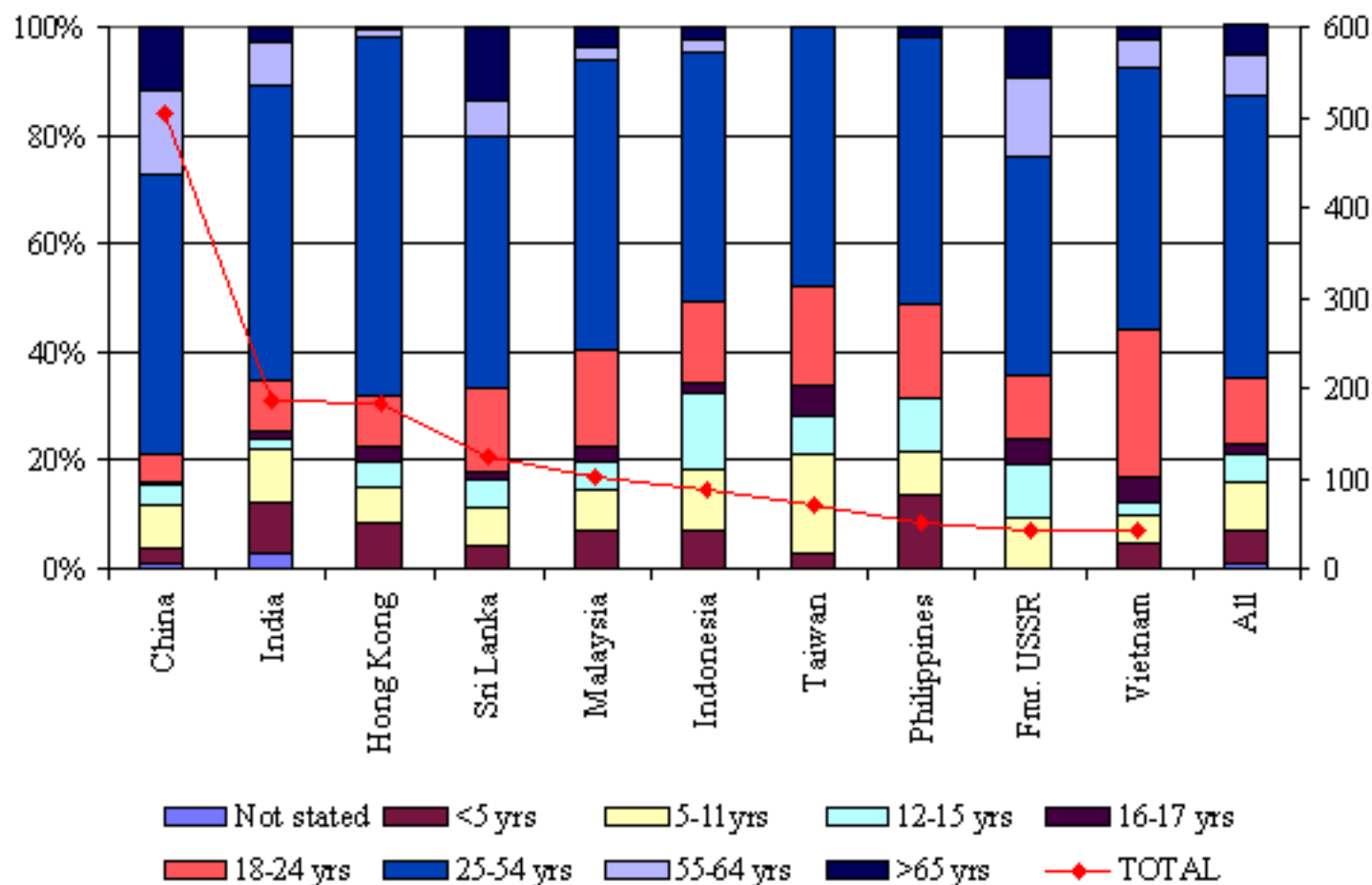


59 Age distribution of the 10 largest migrant groups settling between 1996 and 1999



	China	India	Hong Kong	Sri Lanka	Mysia	Indon	Twn	Philippines	Fmr. USSR	Vnam	All
Not stated	4	5									17
<5 yrs	15	18	15	5	7	6	2	7		2	123
5-11 yrs	39	18	12	9	8	10	13	4	4	2	179
12-15 yrs	19	4	9	6	5	12	5	5	4	1	97
16-17 yrs	3	2	5	2	3	2	4		2	2	40
18-24 yrs	26	18	17	19	18	13	13	9	5	11	239
25-54 yrs	260	102	121	57	55	40	34	25	17	20	1034
55-64 yrs	79	15	2	8	2	2			6	2	143
>65 yrs	59	5	1	17	4	2		1	4	1	109
Total	504	187	182	123	102	87	71	51	42	41	1976

26% of the regions migrants (excluding humanitarian entrants) settled in Monash. 52% of all migrants settling in Monash were aged between 25 and 54 years. 5% of all migrants were aged greater than 65 years. In some communities this figure was higher. For example, 14% of migrants from Sri Lanka and 12% of those from China were in this age group.