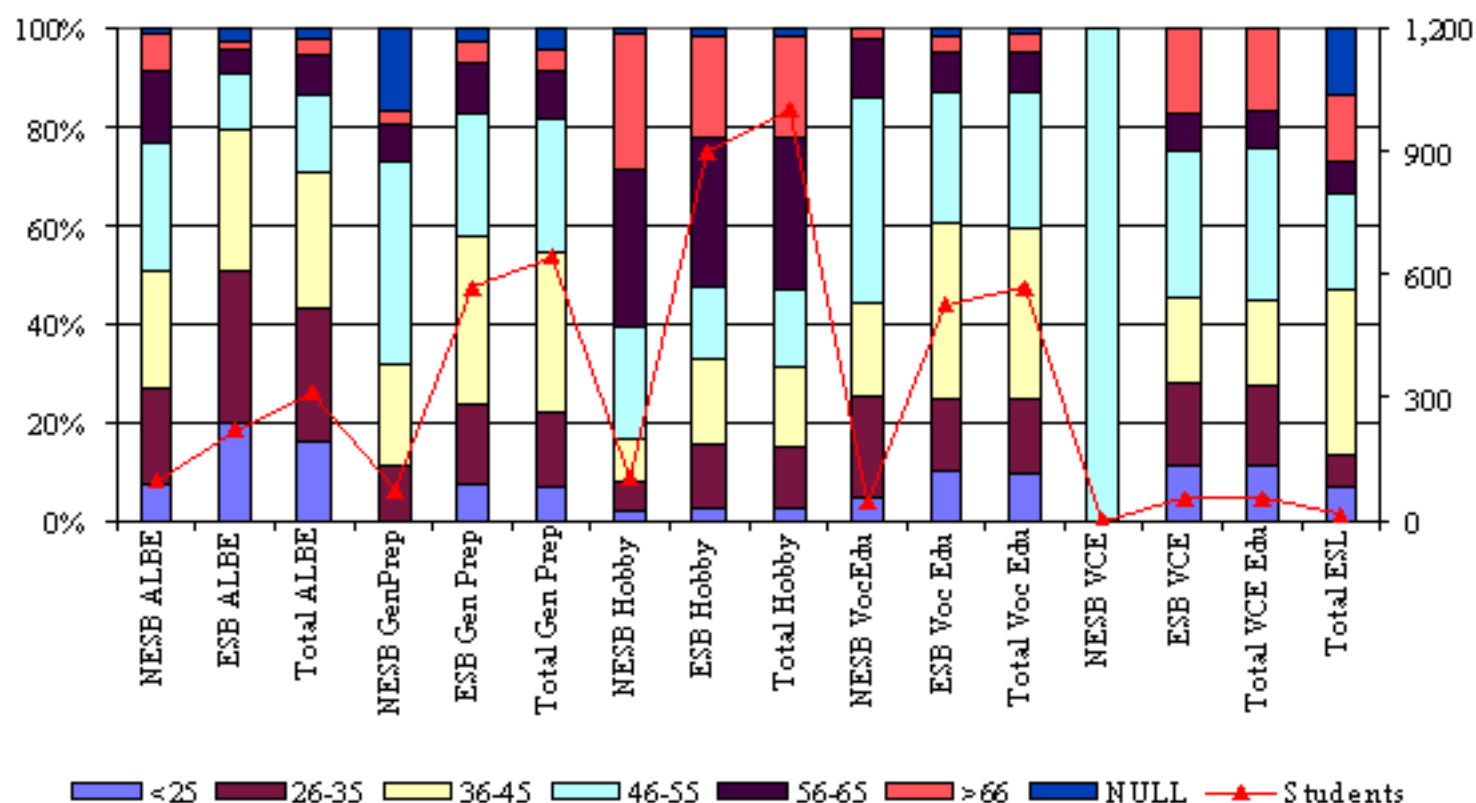


## 2.7 Nature of classes attended by age



ALBE - Adult Literacy and Basic Education

GenPrep - General Preparatory Courses e.g. introduction to computers

VocEdu - Vocational Education e.g. book keeping

Hobby Classes e.g. glass making

	<25 yr.	26-35 yr.	36-45 yr.	46-55 yr.	56-65 yr.	>66 yr.	Null	Total
NESB ALBE	7	18	23	24	14	7	1	94
ESB ALBE	43	68	63	25	11	3	6	219
Total ALBE	50	86	86	49	25	10	7	313
NESB GenPrep	0	8	15	30	6	2	12	73
ESB GenPrep	42	92	194	144	57	26	15	570
Total Gen Prep	42	100	209	174	63	28	27	643
NESB Hobby	2	6	9	23	33	28	1	102
ESB Hobby	21	120	155	136	274	183	13	902
Total Hobby	23	126	164	159	307	211	14	1004
NESB VocEdu	2	9	8	18	5	1	0	43
ESB Voc Edu	52	78	190	138	43	20	6	527
Total Voc Edu	54	87	198	156	48	21	6	570
NESB VCE	0	0	0	1	0	0	0	1
ESB VCE	6	9	9	16	4	9	0	53
Total VCE	6	9	9	17	4	9	0	54
ESL Total	1	1	5	3	1	2	2	15
NESB	12	42	60	99	59	40	16	328
ESB	164	367	611	459	389	241	40	2271
Not Stated	21	88	88	45	18	4	42	306
All	197	497	759	603	466	285	98	2905

28% of students from a NESB were enrolled in ALBE classes compared with 9% of ESB students. 22% of NESB students and 25% of ESB students took part in General Prep courses. This compares to Regional averages of 16% NESB and 30% ESB. 39% of ESB students were enrolled in Hobby classes