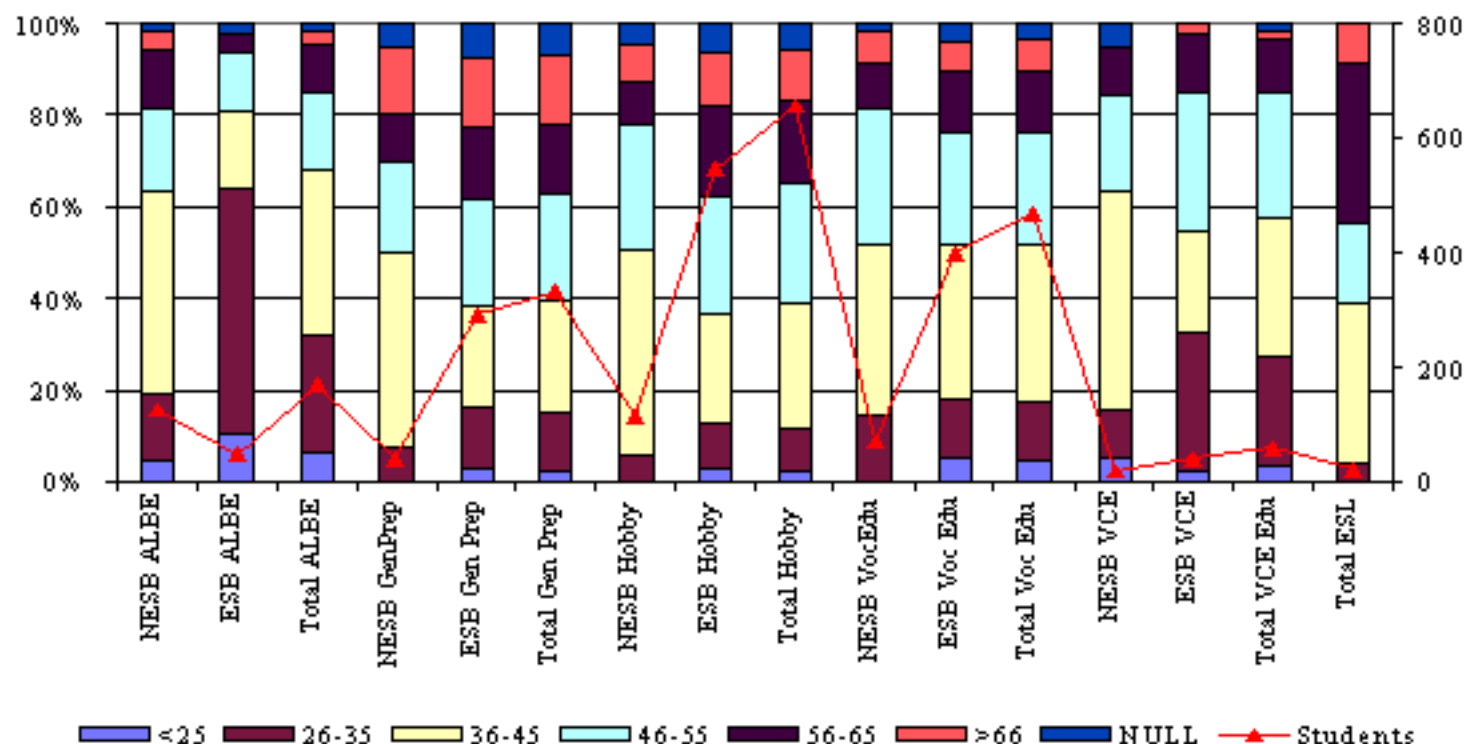


3.7 Nature of classes attended by age



ALBE - Adult Literacy and Basic Education

GenPrep - General Preparatory Courses e.g. introduction to computers

VocEdu - Vocational Education e.g. book keeping

Hobby Classes e.g. glass making

	<25 yrs	26-35 yrs	36-45 yrs	46-55 yrs	56-65 yrs	>66 yrs	Null	Total
NESB ALBE	6	18	55	22	16	5	2	124
ESB ALBE	5	25	8	6	2	0	1	47
Total ALBE	11	43	63	28	18	5	3	171
NESB GenPrep	0	3	17	8	4	6	2	40
ESB GenPrep	8	39	65	69	46	45	21	293
Total Gen Prep	8	42	82	77	50	51	23	333
NESB Hobby	0	7	51	31	11	9	5	114
ESB Hobby	16	54	127	141	109	63	34	544
Total Hobby	16	61	178	172	120	72	39	658
NESB VocEdu	0	10	26	21	7	5	1	70
ESB Voc Edu	21	50	135	96	54	25	17	398
Total Voc Edu	21	60	161	117	61	30	18	468
NESB VCE	1	2	9	4	2	0	1	19
ESB VCE	1	12	9	12	5	1	0	40
Total VCE	2	14	18	16	7	1	1	59
ESL Total	0	1	8	4	8	2	0	23
NESB	7	41	166	90	48	27	11	390
ESB	51	180	344	324	216	134	73	1322
Not Stated	0	11	44	44	42	29	108	278
All	58	232	554	458	306	190	192	1990

32% of NESB students (regional average 20%) were enrolled in ALBE classes compared with 4% of ESB students. 41% of ESB students were enrolled in Hobby classes compared to 29% of NESB students. 5% of NESB students were enrolled in an ESL course compared to a regional average of 25%.