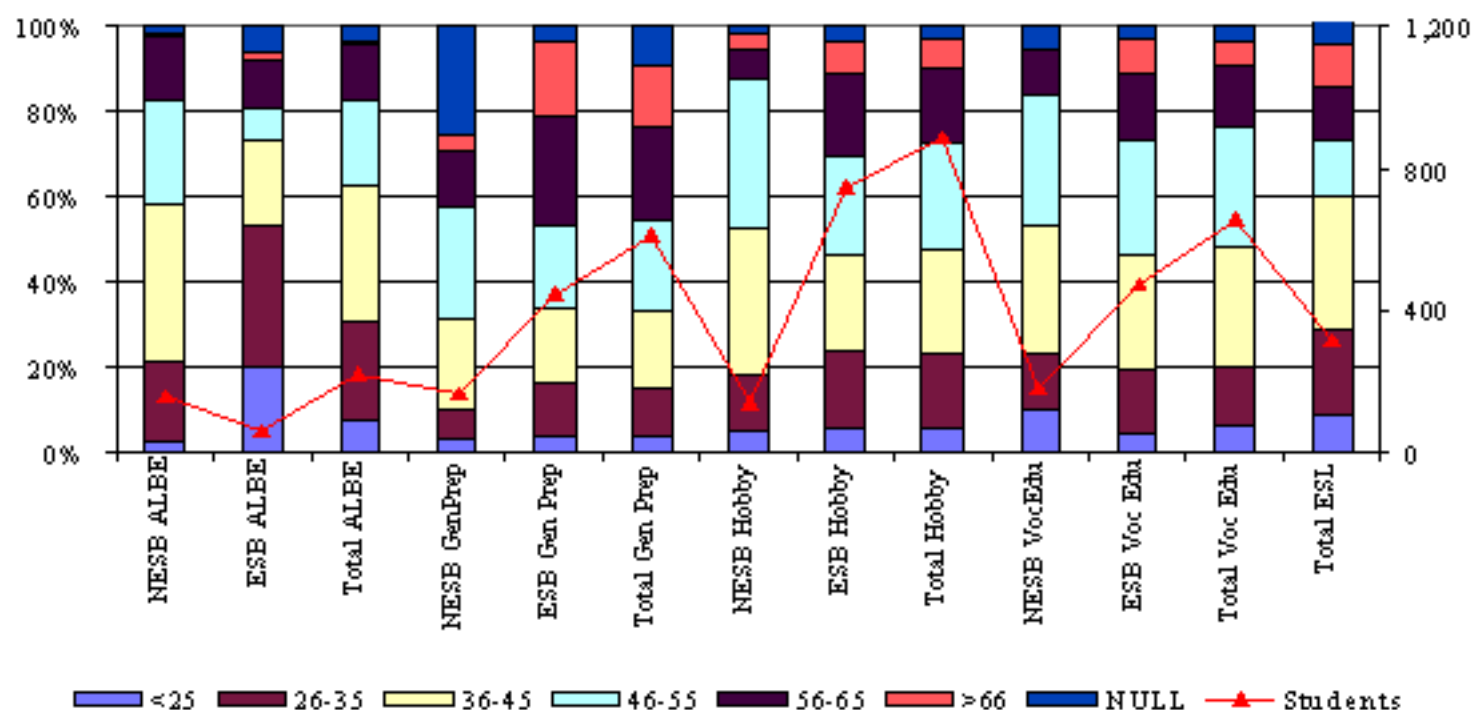


## 5.7 Nature of classes attended by age



ALBE - Adult Literacy and Basic Education

GenPrep - General Preparatory Courses e.g. introduction to computers

VocEdu - Vocational Education e.g. book keeping

Hobby Classes e.g. glass making

	<25 yrs	26-35 yrs	36-45 yrs	46-55 yrs	56-65 yrs	>66 yrs	Null	Total
NESB ALBE	4	30	59	39	23	1	3	159
ESB ALBE	13	21	13	5	7	1	4	64
Total ALBE	17	51	72	44	30	2	7	223
NESB GenPrep	5	12	34	42	22	6	41	162
ESB Gen Prep	18	57	78	86	115	79	17	450
Total Gen Prep	23	69	112	128	137	85	58	612
NESB Hobby	7	18	48	50	9	6	2	140
ESB Hobby	44	137	167	172	147	57	24	748
Total Hobby	51	155	215	222	156	63	26	888
NESB VocEdu	18	24	54	55	19	0	10	180
ESB Voc Edu	21	71	131	128	76	38	13	478
Total Voc Edu	39	95	185	183	95	38	23	658
ESL Total	29	63	99	41	41	32	18	318
NESB	63	145	292	227	114	44	74	959
ESB	96	288	391	391	345	176	58	1745
Not Stated	61	55	90	57	63	79	235	640
All	220	488	773	675	522	299	367	3344
ESB	51	180	344	324	216	134	73	1322
Not Stated	0	11	44	44	42	29	108	278
All	58	232	554	458	306	190	192	1990

17% of students from a NESB were enrolled in ALBE classes compared with 4% of ESB students. 17% of NESB students and 26% of ESB students took part in General Prep courses. 14% of NESB students were enrolled in Hobby classes compared to 43% of students from a NESB. This compares to Regional