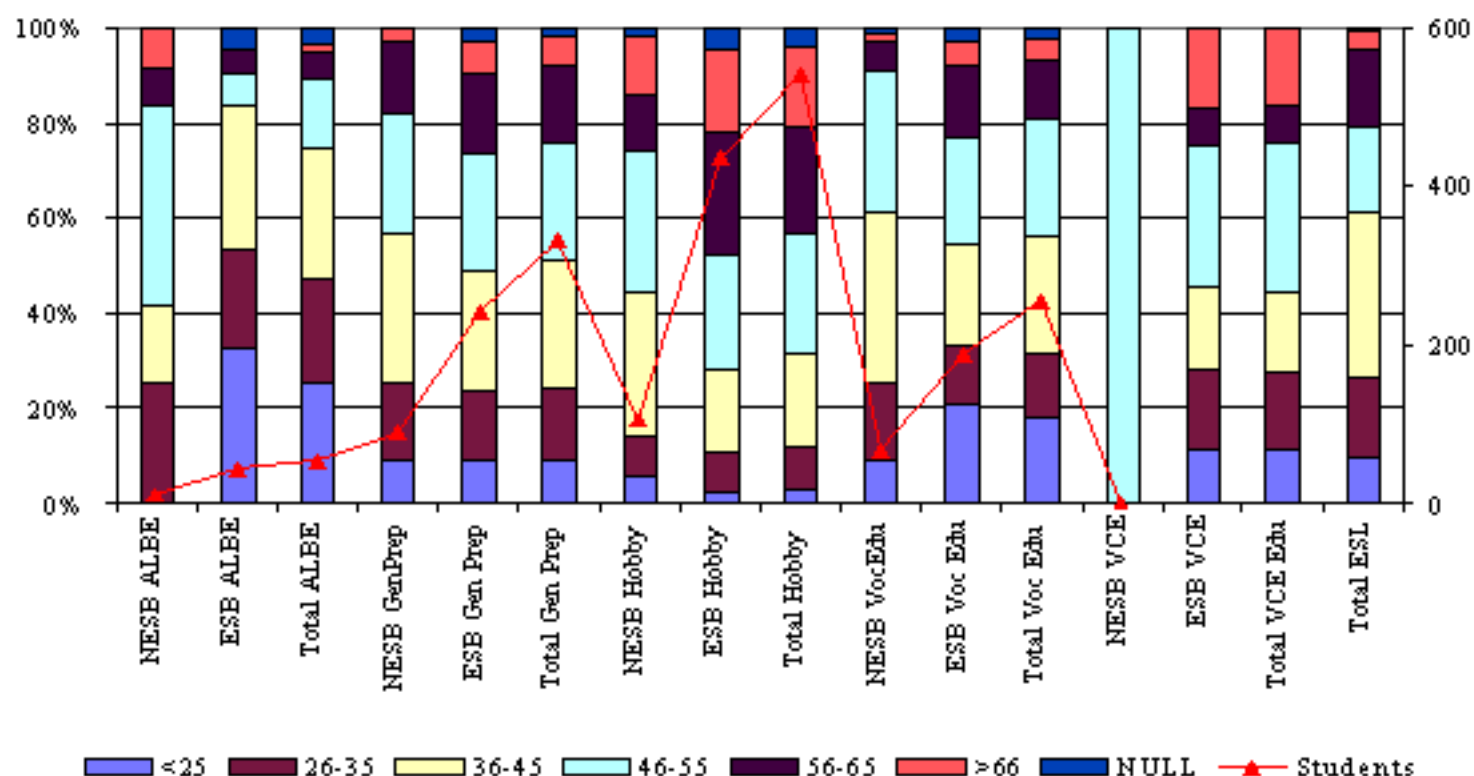


6.7 Nature of classes attended by age



ALBE - Adult Literacy and Basic

GenPrep - General Preparatory Courses e.g. introduction to computers

VocEdu - Vocational Education e.g. book keeping

Hobby Classes e.g. glass making

	<25 yrs	26-35 yrs	36-45 yrs	46-55 yrs	56-65 yrs	>66 yrs	Null	Total
NESB ALBE	0	3	2	5	1	1	0	12
ESB ALBE	14	9	13	3	2	0	2	43
Total ALBE	14	12	15	8	3	1	2	55
NESB GenPrep	8	15	28	23	13	3	0	90
ESB Gen Prep	22	35	61	59	41	17	6	241
Total Gen Prep	30	50	89	82	54	20	6	331
NESB Hobby	6	9	31	31	12	13	2	104
ESB Hobby	10	37	77	104	112	77	20	437
Total Hobby	16	46	108	135	124	90	22	541
NESB VocEdu	6	11	24	20	4	1	1	67
ESB Voc Edu	40	23	40	43	28	10	5	189
Total Voc Edu	46	34	64	63	32	11	6	256
NESB VCE	0	0	0	1	0	0	0	1
ESB VCE	6	9	9	16	4	9	0	53
Total VCE	6	9	9	17	4	9	0	54
ESL Total	35	61	125	65	59	14	2	361
NESB	55	99	210	144	89	32	5	634
ESB	90	116	216	243	207	127	42	1041
Not Stated	66	250	496	478	231	130	195	1846
All	211	465	922	865	527	289	242	3521

2% of students from a NESB were enrolled in ALBE classes compared with 4% of ESB students. This compares to Regional averages of 20% NESB and 5% ESB. 14% of NESB students and 23% of ESB students took part in General Prep courses. 16% of NESB students were enrolled in Hobby classes compared to 41% of students from a ESB. 1 NESB student and 53 ESB students enrolled in VCE