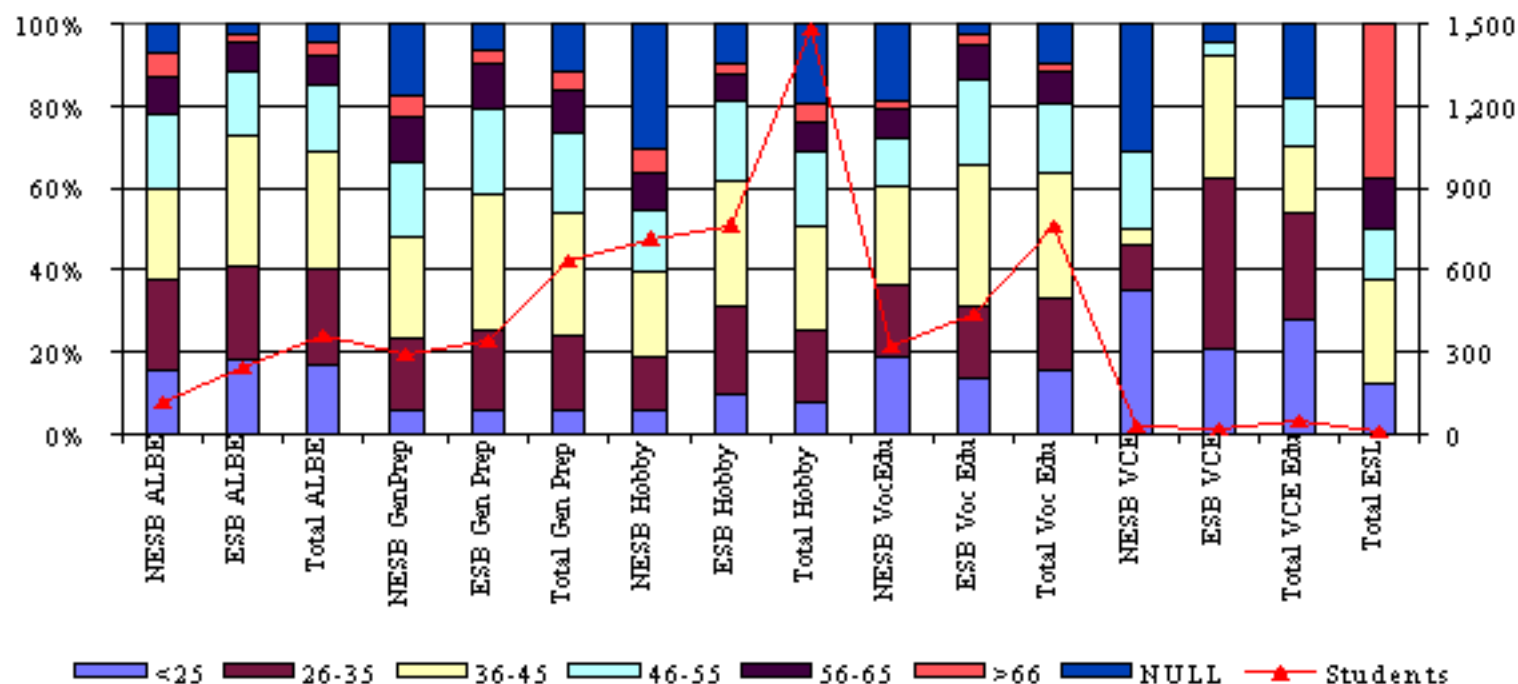


## 7.7 Nature of classes attended by age



ALBE - Adult Literacy and Basic Education

GenPrep - General Preparatory Courses e.g. introduction to computers

VocEdu - Vocational Education e.g. book keeping

Hobby Classes e.g. glass making

	<25 yrs	26-35 yrs	36-45 yrs	46-55 yrs	56-65 yrs	>66 yrs	Null	Total
NESB ALBE	10	14	15	12	7	6	0	64
ESB ALBE	44	56	77	38	16	5	7	243
Total ALBE	54	70	92	50	23	11	7	307
NESB GenPrep	0	3	6	10	6	2	2	29
ESB Gen Prep	20	68	115	71	37	14	21	346
Total Gen Prep	20	71	121	81	43	16	23	375
NESB Hobby	2	8	20	17	13	5	2	67
ESB Hobby	72	168	233	150	45	21	74	763
Total Hobby	74	176	253	167	58	26	76	830
NESB VocEdu	0	2	14	13	7	2	2	40
ESB Voc Edu	59	76	153	90	36	10	13	437
Total Voc Edu	59	78	167	103	43	12	15	477
NESB VCE	0	0	1	1	0	0	0	2
ESB VCE	5	10	7	1	0	0	1	24
Total VCE	5	10	8	2	0	0	1	26
ESL Total	1	0	2	1	1	3	0	8
NESB	13	27	58	54	34	18	6	210
ESB	200	378	585	350	134	50	116	1813
Not Stated	131	200	271	171	99	55	337	1264
All	344	605	914	575	267	123	459	3287

30% of students from a NESB were enrolled in ALBE classes compared with 13% of ESB students. This compares to regional averages of 20% of students from a NESB and 5% ESB. 14% of NESB students and 19% of ESB students took part in General Prep courses. This compares to regional averages of 16% for students from a NESB and 30% of ESB students. 41% of students from a ESB were enrolled in hobby classes compared to 32% of students from a NESB. 4% of ACFI students from a NESB enrolled in an ESL course compared to regional average of 25%.