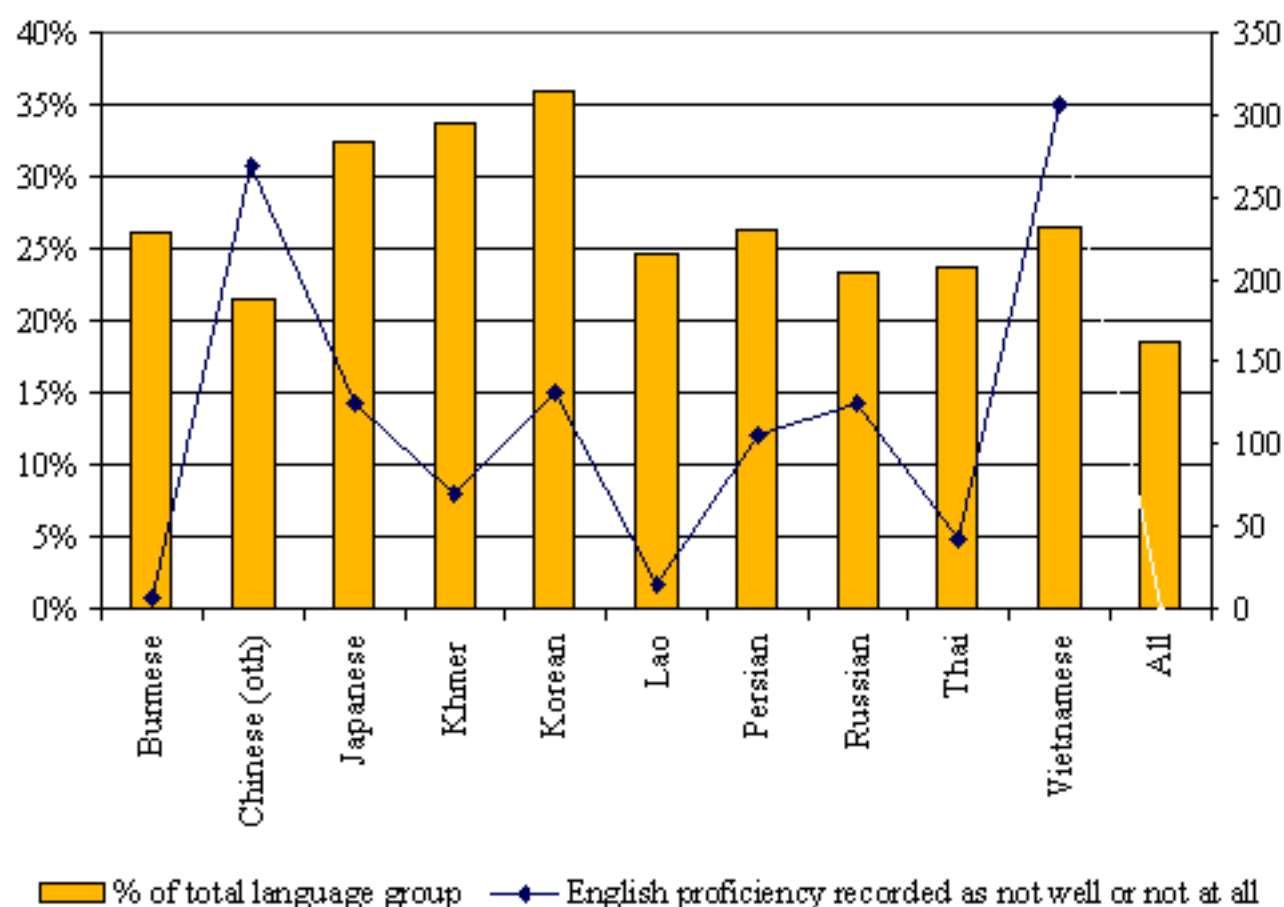


**5.2 10 communities with the largest percentage of their populations recording their English proficiency as "not well or not at all".**



Source: ABS Census 1996

	English proficiency recorded as not well or not at all	% of language group	Total NESB population
Burmese	6	26%	23
Chinese (oth)	269	21%	1252
Japanese	124	32%	383
Khmer	70	34%	208
Korean	131	36%	365
Lao	15	25%	61
Persian	105	26%	398
Russian	125	23%	536
Thai	42	24%	177
Vietnamese	307	26%	1159
LGA Total of NESB	8568	18%	46333

18% of people from a non English speaking background recorded their English proficiency as not well or not at all. Within communities this percentage was significantly higher. For example, over a quarter of the Korean, Khmer, Japanese, Persian, Vietnamese and Burmese speaking communities recorded their English proficiency as either "not well or not at all".