

## Settlement in the City of Maroondah 2004 – 2014

### Country of Birth \* Year of Arrival\*

	2004/05	2005/06	2006/07	2007/08	2008/09	2009/10	2010/11	2011/12	2012/13	2013/14	Total
China	81	149	191	177	158	132	133	124	113	86	1344
India	36	104	100	113	122	100	84	83	63	46	851
Iran	8	7	8	9	25	18	38	41	51	33	238
Malaysia	21	24	21	48	33	31	20	72	58	26	354
Myanmar	37	43	136	170	164	142	100	252	301	178	1523
Philippines	6	10	18	14	22	17	22	14	9	12	144
South Africa	<5	19	15	25	56	14	19	20	23	<5	191
Sri Lanka	19	19	28	22	27	22	16	22	11	<5	186
Thailand	12	19	25	40	18	26	11	22	33	32	238
United Kingdom	50	57	74	56	62	42	39	31	30	15	456
Other	156	214	206	203	217	187	153	146	112	96	1690
<b>Total</b>	<b>426</b>	<b>665</b>	<b>822</b>	<b>877</b>	<b>904</b>	<b>731</b>	<b>635</b>	<b>827</b>	<b>804</b>	<b>524</b>	<b>7215</b>

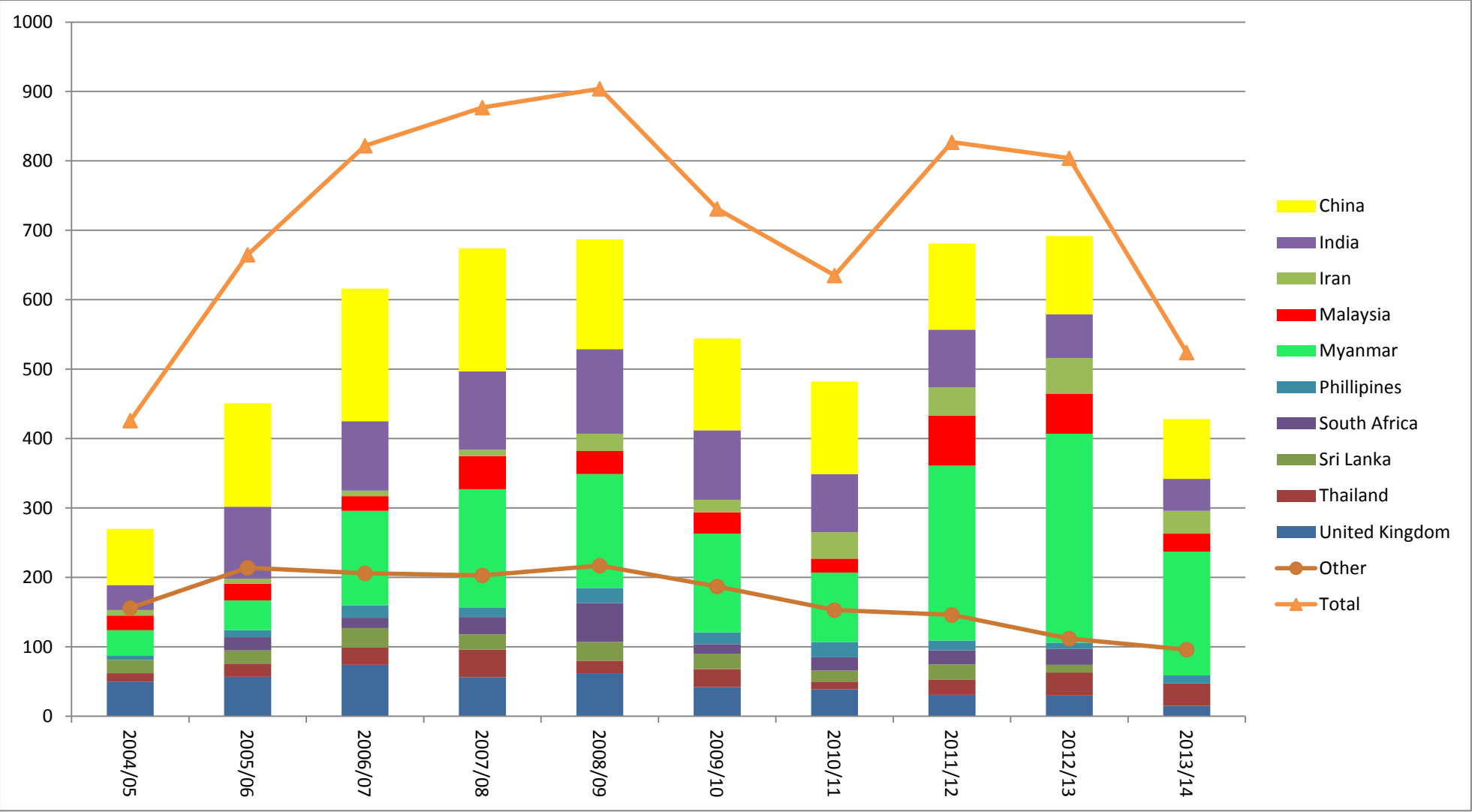
### Migration Category \* Year of Arrival

	2004/05	2005/06	2006/07	2007/08	2008/09	2009/10	2010/11	2011/12	2012/13	2013/14	Total
Family	113	165	198	206	215	210	211	221	209	165	1913
Humanitarian	90	102	177	221	200	178	129	325	396	245	2063
Other	<5										<5
Skilled	222	398	447	450	489	343	295	281	199	114	3238
<b>Total</b>	<b>426</b>	<b>665</b>	<b>822</b>	<b>877</b>	<b>904</b>	<b>731</b>	<b>635</b>	<b>827</b>	<b>804</b>	<b>524</b>	<b>7215</b>

\*The countries selected had the largest number of settlers in the financial year ending June 2014

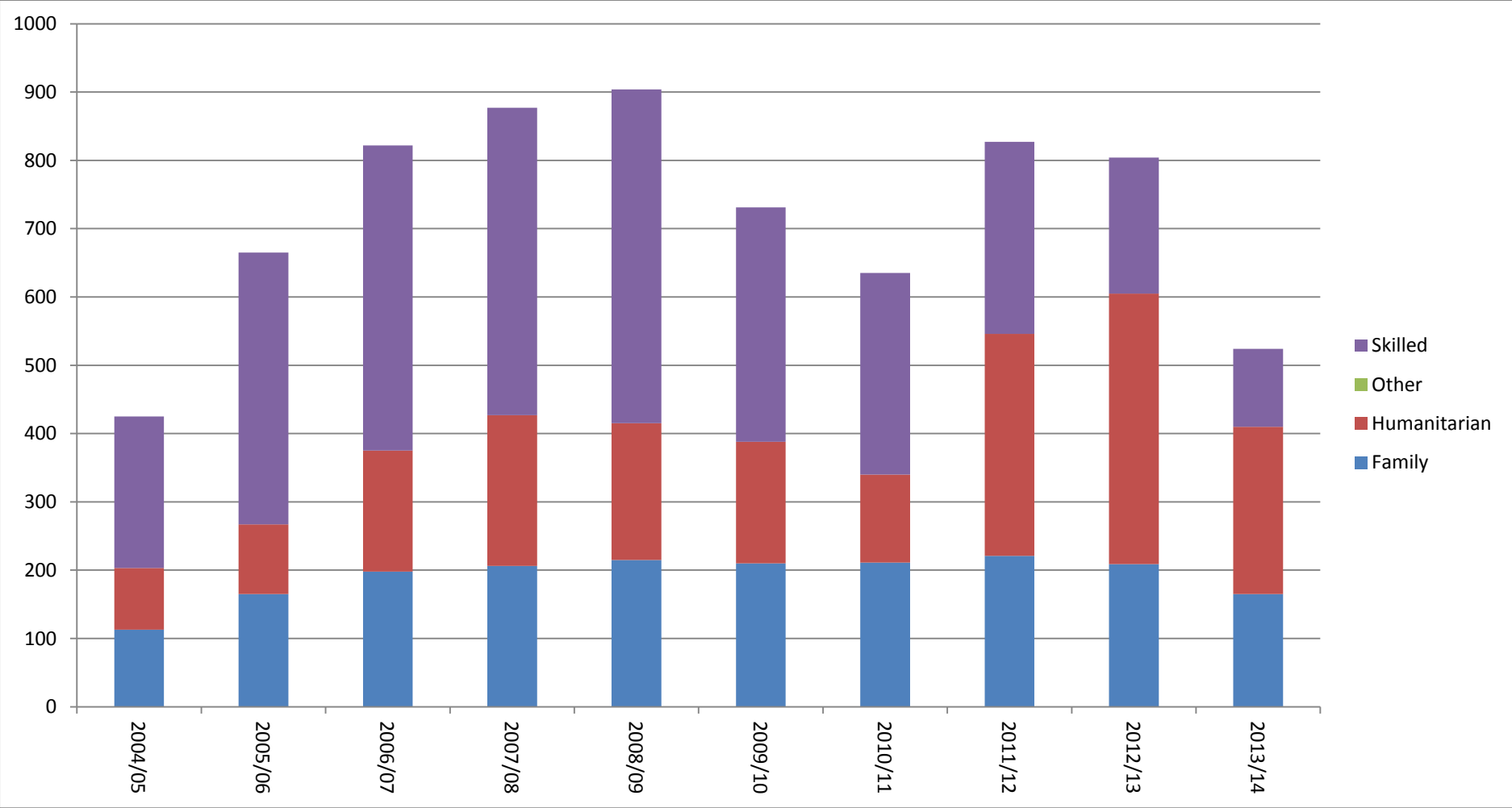
Source: Department of Social Services Settlement Database

### Settlement in the City of Maroondah 2004 – 2014



Source: Department of Social Services Settlement Database

### Settlement in the City of Maroondah 2004 – 2014



Source: Department of Social Services Settlement Database