

# MIC CHILDREN'S SAFETY POLICY

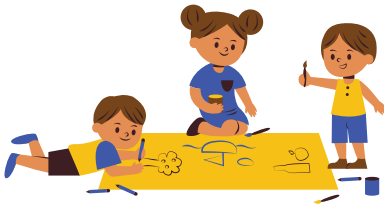
## INFORMATION FOR PARENTS & GUARDIANS

---



### OUR COMMITMENT

The Migrant Information Centre (Eastern Melbourne) (MIC) is strongly committed to ensuring the safety of all children and young people accessing our services.



### SAFE ENVIRONMENT

We aim to create and maintain a safe environment for all children and young people at all MIC offices, programs, events and activities.



### CHILDREN'S PARTICIPATION

We encourage and respect the views of children and young people who access our services. We listen and act upon any concerns that children, young people or their families raise with us.



### DID YOU KNOW?

All MIC staff, volunteers and students on placements must have a current Working with Children's Check and Police Check.

### HAVE YOUR SAY – FEEDBACK FOR MIC

You can provide MIC with feedback or make a complaint.  
Visit: <https://miceastmelb.com.au/contact/send-feedback>  
or call us on (03) 9285 4888.