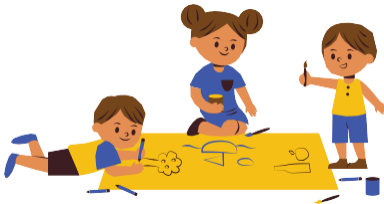


MIC - IN NAUPANGTE HIMNA ATAN RUAHMANNNA A NEIH TE NU LEH PA EMAW ENKAWLTU TAN HRIATTURTE



KAN INTIAMNA

The Migrant Information Centre (Eastern Melbourne) (MIC) te chuan naupang leh rawltharte tan humhimna tha tak pek hi a intiamna a ni.



CHHENVEL HUM HIMNA

MIC hnathawhna hmun (Office) - ah te, hmalaknaah te, thil tihhona leh hun hman zawng zawngahte him taka awm tlan theih hi kan thupui ber a ni.



NAUPANGTE TELVE NA

Keimahni atanga tanpuina la/dawngtu naupang leh rawlthar zawng zawngte kan ngai pawimawhin an ngaihndan leh hmuh dante ngaihthlaksakin, an chungte atanga zawhna leh rawtna a awm pawhin a rang theih ang berin hma kan la nghal thin a ni.



I HRIA EM?

MIC - a hnathawktute (staff), tlawmngaia inpe (volunteer) leh zirlaite chu Children's Check leh Police Check atangin hnathawh phalna an nei ngei ngei tur a ni.

MIC TAN FAK SELNA SAWI TUR I NEI EM

MIC fak selna emaw sawisel tur i neih chuan hetah hian i pe thei ang.

Luhna: <https://miceastmelb.com.au/contact/send-feedback>

or (03) 9285 4888 - ah hian min be thei ang.