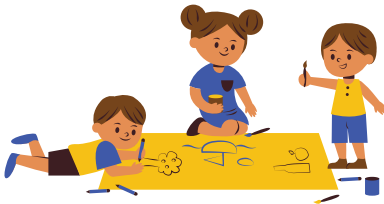


MIC NAUPANGTE' KEPBITNA VAIHAWMNA NU LEH PATE & NAUPANG KEMTE THEIH DING THUTE



KA KICIAMNA UH

Migrant Information Centre (Eastern Melbourne) (MIC) in **huhna ka piak uh naupangte leh khangno khempeuh in kepbithna hoihtak a ngah ding uh ka kiciamna uh ahi hi.**



KIIM LEH PAAM MUANHUAI

MIC office-te, program-te, pawite leh vaisaina tuamtuamte ah naupangte leh khangnote khempeuh adingin kiim le paam muanhuai vaihawmin bawlsak ding tupna ka nei uh hi.



NAUPANGTE' KIHELNA

Ka nasepna/services te a ngah naupangte leh khangnote muhnate thapia-in ka zahtaaksak uh hi. Naupangte, khangnote ahih kei leh **a innkuanpihte' lunghihmawhna a om bangbang te ngaihkhiat sakin malakna ka nei pahpah uh hi.**



NA THEI KHA HIAM?

MIC nasemte, volunteer-te leh saangnaupangte khempeuh pen tulaitak a Working with Children's Check leh Police Check nei hi hamtang ding uh hi.

GEN IN - MIC TAWH KISAI NGAHSUTNATE

MIC ah ngaihsutna ahih kei leh lungkimlohnate kikhia thei hi.

<https://miceastmelb.com.au/contact/send-feedback>

ah pai in ahih kei leh (03) 9285 4888 hopih in.